

# LandForm® X

## Mission Management

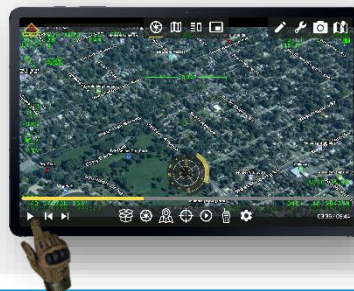


## Carry-On Tablet Mission Management

**LandForm® X** is a comprehensive Mission Management System for Intelligence, Surveillance, and Reconnaissance (ISR) applications offering a variety of Airborne ISR capabilities and situational awareness tools. LandForm® X is deployed on an Android tablet (or embedded chipset), allowing for a “Carry-On” Mission Management solution. Plus, with affordable pricing and a user-friendly interface, LandForm® X makes airborne ISR Mission Management more accessible to Tactical Flight Officers and Sensor Operators world-wide.

### LandForm® X Features

LandForm® X is a full-feature mission management system available on an Android tablet (or embedded chipset). Core capabilities include full sensor control with geointing, moving map, target list, geospatial augmented reality, and a DVR.



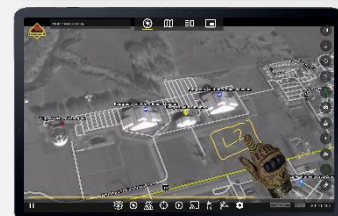
### “Carry-On” Mission Management

LandForm® X provides a carry-on capability, allowing sensor operators to carry their Mission Management System with them from aircraft to aircraft or back to the office for post-mission review.



### User-Friendly & Attractive Price-Point

LandForm® X includes a user-friendly interface and an attractive price-point. Contact us to schedule an introductory call or receive a quote.



## SPECIFICATIONS

### Operating System

Android

### Sensor Connectivity

WIFI  
Ethernet

### Supported EO/IR Sensors

Multiple Major Platforms  
Contact Us for Complete List

### Video & Image Formats

MPEG 2/H.264  
MPEG/KLV – MISB 0601  
STANAG 4609

### Features

Sensor Control  
Geointing  
Moving Map Display  
Target List  
Mission Packing  
Geospatial AR–SmartCam3D®  
Custom GIS Importing  
Geocoding  
Cross Cueing  
Target Marking  
Measurement  
Geospatial Telestrator  
TAK Server Compatible  
DVR



8300 Airport Road – Suite 1  
Middleton, WI 53562 USA

608.824.1131  
[landform@ctic.us](mailto:landform@ctic.us)  
[www.ctic.us](http://www.ctic.us)



## PERFORMANCE HISTORY

SmartCam3D®, which is embedded within LandForm® X, has a rich performance history, originally serving as the primary flight display for the NASA X38 during initial unmanned testing. Additionally, since 2003, the technology has been deployed with US Army Tactical Unmanned Systems as a module within the Universal Ground Control Stations (UGCS), used in conjunction with the Shadow and Gray Eagle UAV Platforms. Additional integrations touch all levels of the FMV ecosystem.

## GEOSPATIAL AUGMENTED REALITY

**Baseline GIS Data:** Display road vectors, street names, POIs, and other common geospatial entities within live FMV.

**Custom GIS Data:** Import (e.g., .kmz) and display custom GIS entities.

**Vectors and Polygons:** Generate and display vector paths or polygons.

**3D Objects:** Display 3D Entities (e.g., .obj files).

**Common Operational Picture Entities:** Display User-Device locations (e.g., ATAK Device Locations).



## FMV ANNOTATION TOOLS

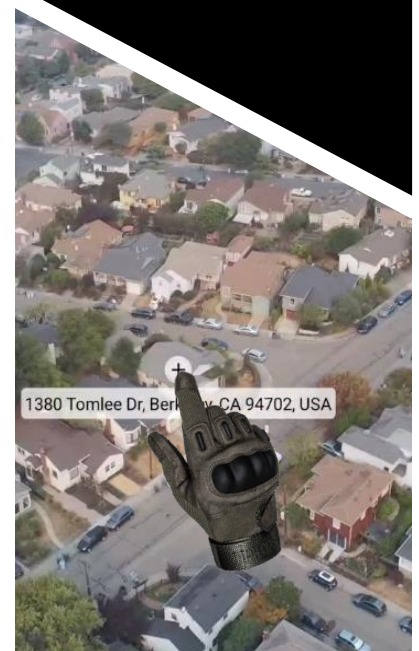
**Geocoding:** Enjoy three geocoding options to forward- or reverse-geocode locations within live FMV.

**Cross-Cueing:** Simultaneously navigate the map and FMV display using an Active and Reactive cursor.

**Target Marking:** Mark targets by tapping in the video. Customize the POI marker and add it to the Target List.

**Measurement:** Range & Bearing tools within live FMV. Measure areas of closed polygons.

**Geospatial Telestrator:** Free-hand annotate live FMV.



8300 Airport Road – Suite 1  
Middleton, WI 53562 USA

608.824.1131  
[landform@ctic.us](mailto:landform@ctic.us)  
[www.ctic.us](http://www.ctic.us)